



# New Medical/Professional Office Condominiums

## Knollwood Center, Apex, NC



# KNOLLWOOD C · E · N · T · E · R

Located at the intersection of US 64  
and Laura Duncan Road

- ◆ Knollwood Center is a new, class “A” office condo building comprising approximately 24,400 sq. ft. located in the rapidly growing Apex market
- ◆ The site is across from Apex High School and adjacent to the future Village of Apex which includes 1,300 new home sites
- ◆ Suites range from 1,500 sq. ft. to 12,200 for a full floor
- ◆ The site will have parking available for 109 cars and full turn access off Laura Duncan Road
- ◆ Owners will receive a deeded interest in their individual suites that can be sold or leased at any time
- ◆ Pre-construction prices are \$185 psf for cold dark shell
- ◆ Lease rates are \$22 NNN
- ◆ Expected delivery is scheduled for the second quarter of 2009



For Ownership or Leasing Information  
Please Contact:

**John Daly**

Office 919.481.9000

Direct 919-259-3148

[johndaly@realprorealtync.com](mailto:johndaly@realprorealtync.com)

Developed by  
**Redberry** ventures

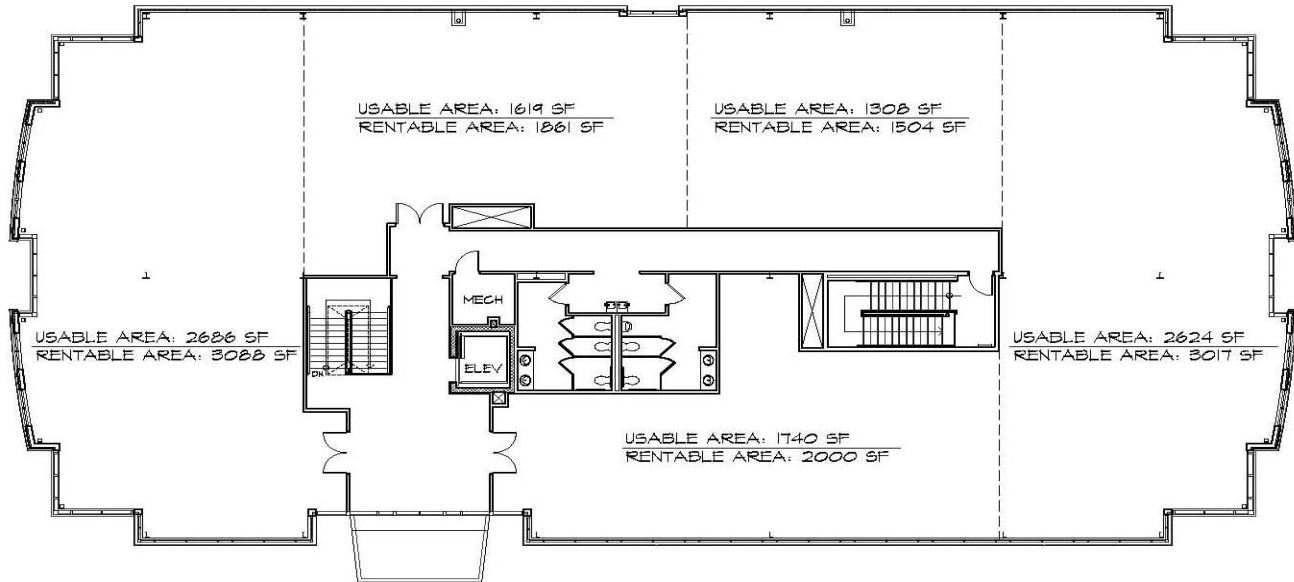
[www.redberryventures.com](http://www.redberryventures.com)



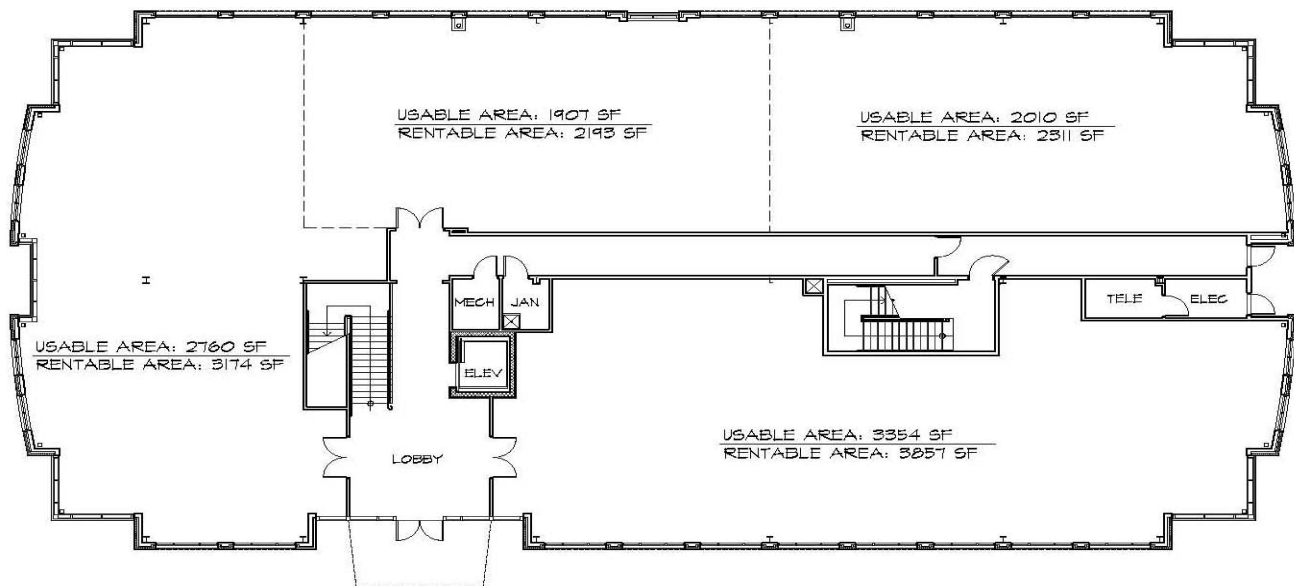
# New Medical/Professional Office Condominiums

## Knollwood Center, Apex, NC

# KNOLLWOOD C · E · N · T · E · R



Second Floor Plan  
Net Area: 12,175 SF



First Floor Plan  
Net Area: 12,055 SF



# New Medical/Professional Office Condominiums

Knollwood Center, Apex, NC

## KNOLLWOOD C • E • N • T • E • R



1 REAR ELEVATION (NORTH)  
A2J



2 SIDE ELEVATION (WEST)  
A2J



4 SIDE ELEVATION (EAST)  
A2J

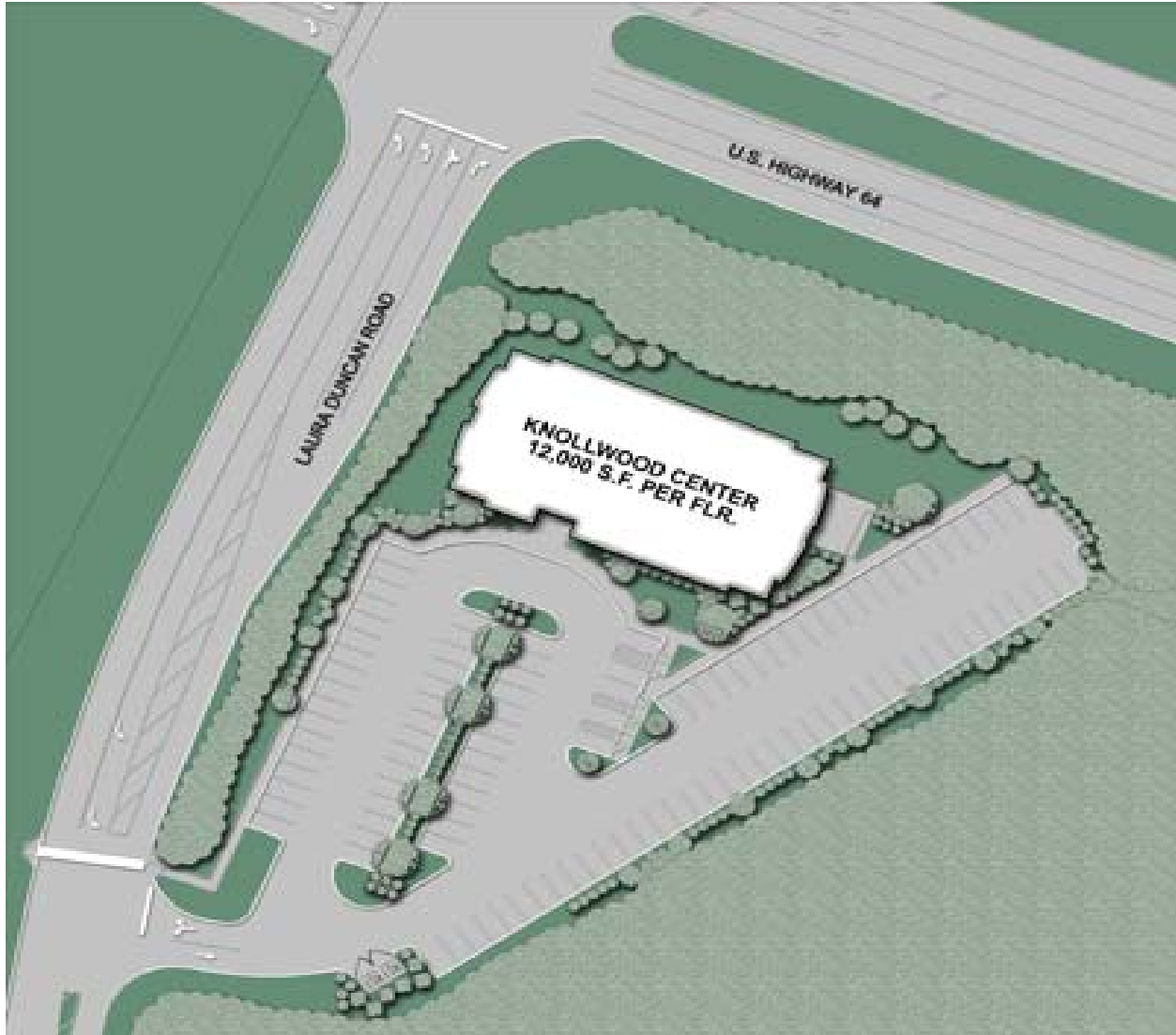


1 FRONT ELEVATION (SOUTH)  
A2J



# New Medical/Professional Office Condominiums

## Knollwood Center, Apex, NC



Developed by



[www.redberryventures.com](http://www.redberryventures.com)

For Ownership or Leasing Information  
Please Contact:

**John Daly**

Office 919.481.9000

[johndaly@realprorealtync.com](mailto: johndaly@realprorealtync.com)